

MIAMI EDITION

# FLORIDA DESIGN

## THE GREAT OUTDOORS

FURNITURE, ACCESSORIES & POOL EXTRAS FOR LIFE ALFRESCO

*Inside...*

GARDEN STYLE  
GREEN ADVICE FROM  
MIAMI'S LANDSCAPE PROS

## | FEATURED DESIGNERS |



### BRETT SUGERMAN & GISELLE SUGERMAN

**B+CDESIGN**

'NEUTRAL ENERGY,' PAGE 84

Functional minimalism is what designers Brett and Giselle Sugerman are known for, and functional minimalism is what they delivered in the 6,898-square-foot Pinecrest residence featured on our cover. "We designed a home for enthusiasts of clean lines and modern details," says Brett. "Our clients envisioned interiors that would exude sleek sophistication, a home designed for entertaining friends, while offering privacy and ample spaces to unwind and recharge after their travels. This was a straightforward project that set the foundation for a seamless and successful process." [bandgdesign.com](http://bandgdesign.com)



### MAX STRANG, ALEXANDRA MANGIMELLI & ELIZABETH STARR

**STRANG DESIGN**

'INSIDE NATURE,' PAGE 94

Renowned architect Max Strang and his team approached the interiors of the Coconut Grove residence featured in this issue with their signature holistic approach, one that aims to establish a connection between the home, its inhabitants, and the environment. "This project was a study in balance that combined raw, organic materials like concrete with textures that reflect the authenticity of the environment," says Strang. "The architecture, interiors, and landscape design work together to establish an effortless flow between indoors and outdoors, blurring the lines between the two. Every detail was infused with an appreciation for the surrounding lush landscape." [strang.design](http://strang.design)



### TOBIAS PETRI & SVEN PETZOLD

**HOLZRAUSCH**

'GERMAN PRECISION,' PAGE 106

"When we look at rooms, we see an opportunity to carve out the unique character of a place through special materials and customized functional solutions," says Tobias Petri, co-principal of the Holzrausch design firm in Munich, Germany. That approach best summarizes the studio's first interior design commission in the States, a condo on Fisher Island. Together with partner Sven Petzold and the Holzrausch team, Petri set out to deliver an elegant and timeless look. "Designed as a cohesive unit, the residence features seamless transitions between functional areas, with continuous floor and wall materials creating striking visual axes," says Petri. "The project was a great pleasure for everyone involved." [holzrausch.de](http://holzrausch.de)



### ADRIANA HOYOS

**ADRIANA HOYOSDESIGNSTUDIO**

'BRICKELL BRAVADO,' PAGE 114

"It's urban, sophisticated, elegant, comfortable, and timeless," says Adriana Hoyos about the Brickell sky residence in this edition. Responsible for both the interior design and the project's architectural elements, Hoyos and her team collaborated closely with Mobius Architecture Group to ensure their design was both viable and functional. "I was inspired by Manhattan's speakeasies and the glamour of Miami, which resulted in an organic modern aesthetic," says the designer. "The color palette features earthy tones, with accents of truffle brown, dusty mustard, and deep green balanced with bold black details that add contrast and structure." [adrianaheyosdesignstudio.com](http://adrianaheyosdesignstudio.com)



### CHRISTOPHER CAWLEY

**CHRISTOPHERCAWLEYLANDSCAPE ARCHITECTURE**

'GREEN HARMONY,' PAGE 124

One of South Florida's most respected landscape architects put his talents to the test when he took on the gardens of a sprawling 7,246-square-foot Coral Gables residence. Working closely with Strang Design and Mocca Construction, Cawley envisioned all aspects of the property, from the resplendent entrance grounds to the backyard pool patio. "Our primary objective was to harmonize the modern lines of the residence with its landscape," says Cawley. "This was achieved by incorporating crisp, clean hedges and creating visual interest by using tropical plantings and textures and large native oak trees. We like to call the style lush tropical modern." [christophercawley.com](http://christophercawley.com)

# Brickell Bravado

A SEASONED DESIGNER DELIVERS METROPOLITAN ELEGANCE IN A HIGH-RISE RESIDENCE OVERLOOKING BISCAYNE BAY

INTERIOR DESIGN ADRIANA HOYOS, ADRIANA HOYOS DESIGN STUDIO, MIAMI, FL  
TEXT JEANNE DELATOURDER  
PHOTOGRAPHY GABRIEL VOLPI, MIAMI, FL

THE BRICKELL NEIGHBORHOOD has long seduced residents with its metropolitan energy. Known as the “Manhattan of the South,” the area’s landmark high-rises and heavy foot traffic bring the vibe of New York City to Miami.

So strong is the community’s allure that it prompted a pair of well-traveled residents to relocate to the Four Seasons Residences tower on Brickell Avenue. Within walking distance to the best retail shops and restaurants the city has to offer, the couple’s new 4,470-square-foot condo offers the kind of million-dollar views that have put Miami on the global luxury real estate map.

“The homeowners chose this area in particular because it offers the perfect combination of convenience, elegance, and a strong connection to the surroundings,”

says interior designer Adriana Hoyos, who became the couple’s trusted style source after conceptualizing two of their previous coastal Florida residences. Cofounded with her husband, Eduardo Perez, Hoyos’ international company has emerged as a preeminent luxury design brand and business conglomerate with

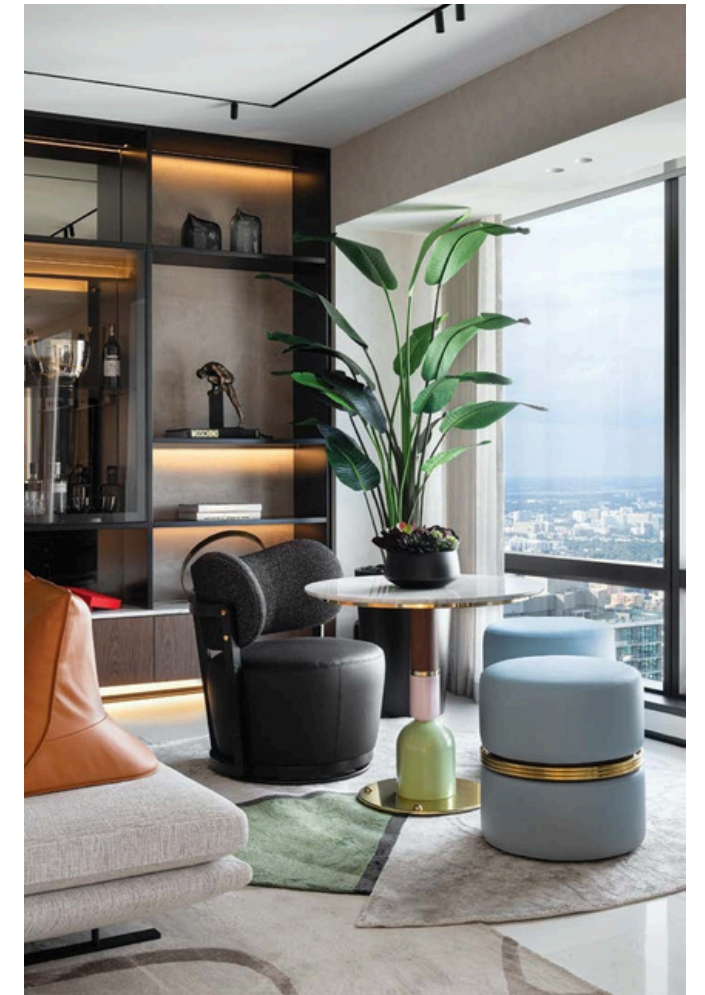


THIS POSH PIED-A-TERRA AT MIAMI'S FOUR SEASONS RESIDENCES INCLUDES A BAR AREA FEATURING A CUSTOM-DESIGNED TABLE BY ADRIANA HOYOS PAIRED WITH CHAIRS FROM FERRI CASA. A STRIKING WALL INSTALLATION BY ROBERTO SCULLING ENTITLED HALL TERRAZZOTA NECKLACE COMPLEMENTS WALLCOVERING FROM GILLEN USA, LENDING BOTH CHARACTER AND TEXTURE TO THE SPACE.

A CLEAN-LINED CUSTOM DINING TABLE BY ADRIANA HOYOS COUNTERBALANCES CURVY TWO-TONED MINOTTI CHAIRS. OVERHEAD, A STATEMENT CHANDELIER FROM TRAZZO LIGHTING SUSPENDS FROM THE CEILING, CREATING AN AMBIENT GLOW. AN ADJACENT LIVING AREA DELINEATES THE SPACE, HOUSING A COZY MINOTTI SOFA GROUPING ACCENTUATED WITH A LUXURY LIVING COCKTAIL TABLE AND DRINK TABLES FROM HEZZO COLLECTION.



THE KITCHEN ARTICULATES A BEAUTIFUL BLEND OF FUNCTIONALITY AND ELEGANCE, FEATURING CABINETRY AND A CENTRAL ISLAND DESIGNED BY ADRIANA HOYOS DESIGN STUDIO AND FABRICATED BY ORNARE. A LINEAR PENDANT FIXTURE FROM LASVIT LIGHTING CASTS A WARM GLOW OVER THE WATERFALL ISLAND DOTTED WITH RICH GREEN CUSTOM COUNTER STOOLS.



ABOVE: THE FAMILY/LOUNGE ROOM EMANATES A WARM VIBE WITH A HALL OF CUSTOM CABINETRY IN DARK VENEER HOODS DESIGNED BY ADRIANA HOYOS DESIGN STUDIO. A COZY CORNER VIGNETTE HIGHLIGHTS A SMALL PEDESTAL TABLE PAIRED WITH HEZZO COLLECTION OTTOMANS, OFFERING A COFFY PERCH FOR TAKING IN THE CITY VIEWS.

headquarters in Miami and a dynamic project portfolio spanning 17 countries.

Responsible for both the interior design and the project's architectural elements, Hoyos and her team collaborated closely with Mobius Architecture Group to ensure their design proposal was both viable and functional. The goal was to create a harmonious, efficient, and elevated space while carefully respecting the building's structural integrity and avoiding interference with its existing pillars. "Our design was inspired by the energy and movement of Manhattan's speakeasies combined with the glamour of Miami, resulting in an organic modern aesthetic," notes the designer. "The color palette features earthy tones, with accents of truffle brown, amber, dusty mustard, and deep green balanced with bold black details that add contrast and structure."

The Hoyos team meticulously selected fabrics, furnishings, and finishes to achieve a soft, sophisticated feel. Rounded furniture and subtle textures enhance the flow and openness of the space, while selective elements,



ABOVE: AN INVITING GAME ROOM AREA FORMS AN AIN'T INTERLUDE BETWEEN THE KITCHEN AND FAMILY ROOM, WITH A BILLIARDS TABLE FROM CRATE & BARREL GRABBING THE SPOTLIGHT. ON THE OPPOSITE SIDE, A SLEEK HALL NICHE HOLDS AN ETHEREAL WHITE SCULPTURAL PIECE, PROVIDING DRAMATIC CONTRAST AGAINST THE DARK WOOD ACCENTS.



LEFT: FRAMED BY A FLUTED WOOD SCREEN LENDING ARCHITECTURAL INTEREST, THE HOME OFFICE OFFERS A TRANQUIL AND FUNCTIONAL WORKSPACE, BLENDING SOPHISTICATION WITH COMFORT. A CHIC DESK FROM ROVE CONCEPTS PAIRS WITH A POLTRONA FRANU DESK CHAIR, OFFERING BOTH ELEGANCE AND ERGONOMIC SUPPORT. TWO HINOTTI CHAIRS COMPLETE THE SEATING ARRANGEMENT, CREATING A BALANCED AND INVITING ENVIRONMENT.



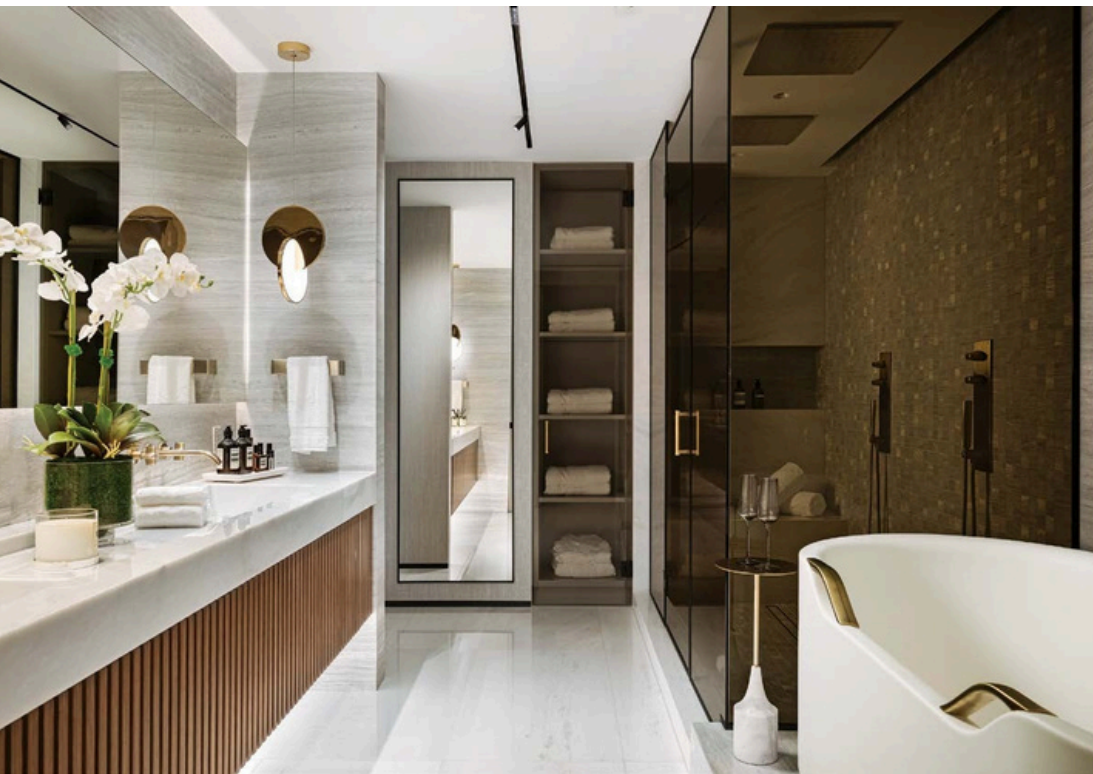
CHIC SEATING PIECES AND A COCKTAIL TABLE BY ADRIANA HOYOS BLEND WITH A SOFA FROM LIGNE ROSET IN THE FAMILY ROOM. A SCULPTURE BY KANS ANIMATES THE SPACE.

such as built-in cabinetry and ceiling treatments, were custom-designed to befit the aesthetic flawlessly. Standout features, including custom millwork and bespoke details, introduce warmth and personality, while floor-to-ceiling windows flood the space with natural light, displaying exceptional views of the Miami skyline, Biscayne Bay, and the Atlantic Ocean. "The result is a cohesive, timeless home that reflects the homeowners' lifestyle while embracing the natural beauty of its surroundings," says Hoyos. Upon entering the apartment, one is welcomed into a seamless flow of spaces where every detail has been thoughtfully curated. Custom pieces by Adriana Hoyos Design Studio mingle with dynamic lighting fixtures and eye-catching works of art in nearly every space. Throughout the home, skillfully selected materials—rich woods, finely crafted millwork, and architectural enhancements—reflect a unified and classic aesthetic, blending comfort with sophistication. Each room balances textures, tones, and architectural elements to generate a luxurious and inviting space.

"This project was very special because it's the third home we've designed for this client, who is very dear to us," Hoyos notes. "However, this one was different because we wanted it to feel much more intimate and tailored to their lifestyle. For us, it's essential to understand how a client lives and what they want to express in their new space and then transform those ideas into a design that improves their well-being."

The couple's new address has become their private retreat, a space where they can disconnect from the world and truly feel at ease. Among their most essential requests was that every detail be intentionally designed to provide comfort and tranquility. And just as their Four Seasons dwelling emanates a palpable, soothing hospitality, it is also elevated to the highest level of luxury.

"What I enjoyed most about this project was seeing how everything we envisioned together came to life and how every detail reflected the clients' personalities," says Hoyos. "Creating a home that feels both purposeful and deeply meaningful to them was an incredible process."



ABOVE: BOTH SERENE AND ELEGANT, THE PRIMARY BATHROOM SHOWCASES AN ELABORATE CUSTOM SHOWER WALL, CABINETRY, AND SCONCES, ALL DESIGNED BY ADRIANA HOYOS DESIGN STUDIO AND FABRICATED BY HEICA CONSTRUCTION. A SOAKING TUB FROM ARHANI/CASA EPITOMIZES HIGH-END LUXURY, PUNCTUATING THIS SPA-LIKE SANCTUARY.

ABOVE RIGHT: COMBINING SOFTNESS WITH SOPHISTICATION, THE PRIMARY BEDROOM SUITE HOLDS A CUSTOM-DESIGNED BED BY ADRIANA HOYOS PAIRED WITH PENDANT FIXTURES FROM TRAZZO LIGHTING AND HARMONY LUXURY FURNITURE BESIDE CHESTS. A FLUTED HOOD ACCENT WALL FABRICATED BY HEICA CONSTRUCTION SERVES AS A FOCAL POINT, WHILE A MINOTTI BENCH AND SMALL TABLE FROM HEZZO COLLECTION CREATE IMPECCABLE FINISHING TOUCHES.



**SOURCES**  
**BAR AREA**  
 TABLE AND BAR CABINETRY - ADRIANA HOYOS DESIGN STUDIO, MIAMI, FL  
 CHAIRS - FENZI CASA, MIAMI, FL  
 HALL TERRACOTTA NECKLACE - ROBERTA SCHILLING, MIAMI, FL  
 HALL COVERING - ORLEAN USA, MIAMI, FL  
 AREA RUG - HARMONY RUGS, MIAMI, FL  
**DINING AREA**  
 TABLE - ADRIANA HOYOS DESIGN STUDIO, MIAMI, FL  
 CHAIRS - MINOTTI, MIAMI, FL  
 CHANDELIER - TRAZZO LIGHTING, MIAMI, FL

**LIVING ROOM**  
 SOFA GROUPING - MINOTTI, MIAMI, FL  
 COCKTAIL TABLE - LUXURY LIVING, MIAMI, FL  
 DRINK TABLE - HEZZO COLLECTION, HEZZOCOLLECTION.COM  
 ACCENT TABLES - ADRIANA HOYOS DESIGN STUDIO, MIAMI, FL AND HEZZO COLLECTION, HEZZOCOLLECTION.COM  
 FLOOR LAMP - TRAZZO LIGHTING, MIAMI, FL  
**KITCHEN**  
 CABINETRY AND ISLAND DESIGNED BY ADRIANA HOYOS DESIGN STUDIO, MIAMI, FL, AND FABRICATED BY ORNARE, MIAMI, FL  
 STOOLS - ADRIANA HOYOS DESIGN STUDIO, MIAMI, FL  
 LIGHTING - LASVIT LIGHTING, MIAMI, FL

**FAMILY/LOUNGE ROOM**  
 SOFA, CHAIR, AND COCKTAIL AND PESTAL TABLES - ADRIANA HOYOS DESIGN STUDIO, MIAMI, FL  
 OTTOMANS - HEZZO COLLECTION, HEZZOCOLLECTION.COM  
 TABLE - MINOTTI, MIAMI, FL  
 DOUBLE FACE SOFA - LIGNE ROSET, MIAMI, FL  
 HALL CABINETRY DESIGNED BY ADRIANA HOYOS DESIGN STUDIO, MIAMI, FL, AND FABRICATED BY HEICA CONSTRUCTION, MIAMI, FL  
 BILLIARDS TABLE - CRATE & BARREL, MIAMI, FL  
 AREA RUG - HARMONY RUG, MIAMI, FL  
**PRIMARY BATHROOM**  
 CABINETRY AND SCONCES - HEICA CONSTRUCTION, MIAMI, FL

SHOWER WALL DESIGNED BY ADRIANA HOYOS DESIGN STUDIO, MIAMI, FL, AND FABRICATED BY HEICA CONSTRUCTION, MIAMI, FL  
 TUB - ARHANI/CASA, MIAMI, FL  
**PRIMARY BEDROOM**  
 BED, HEADBOARD, AND CHAIRS - ADRIANA HOYOS DESIGN STUDIO, MIAMI, FL  
 HOODEN WALL DESIGNED BY ADRIANA HOYOS DESIGN STUDIO, MIAMI, FL, AND FABRICATED BY HEICA CONSTRUCTION, MIAMI, FL  
 SIDE CHESTS - HEZZO COLLECTION, HEZZOCOLLECTION.COM  
 PENDANT LIGHTING - TRAZZO LIGHTING, MIAMI, FL  
 BENCH - MINOTTI, MIAMI, FL  
 SMALL TABLE AND AREA RUG - HARMONY LUXURY FURNITURE, MIAMI, FL